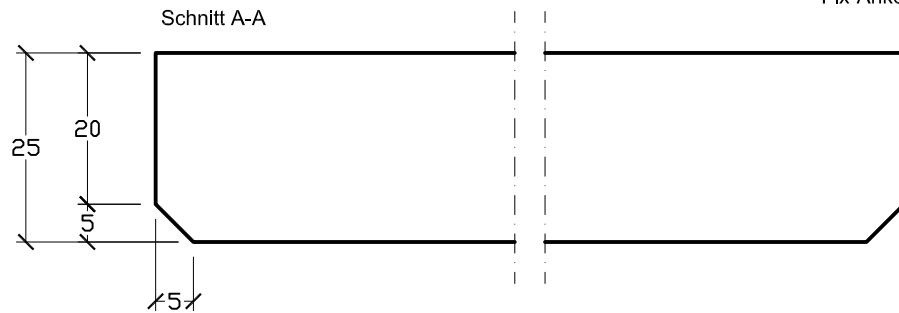
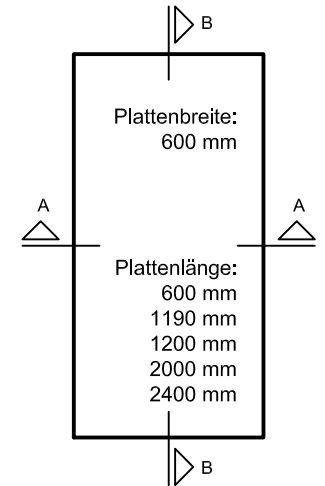
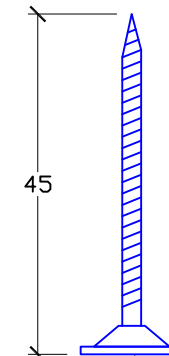
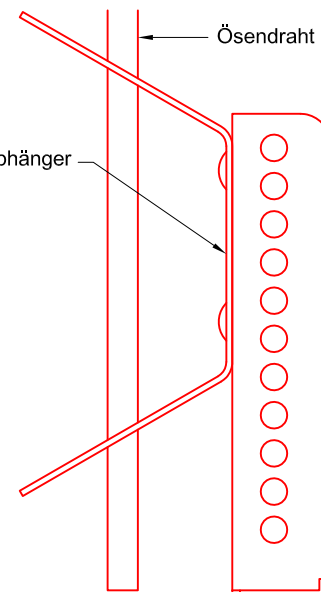


Modulmass (mm) : 600 x 600 / 1190 / 1200 / 2000/ 2400

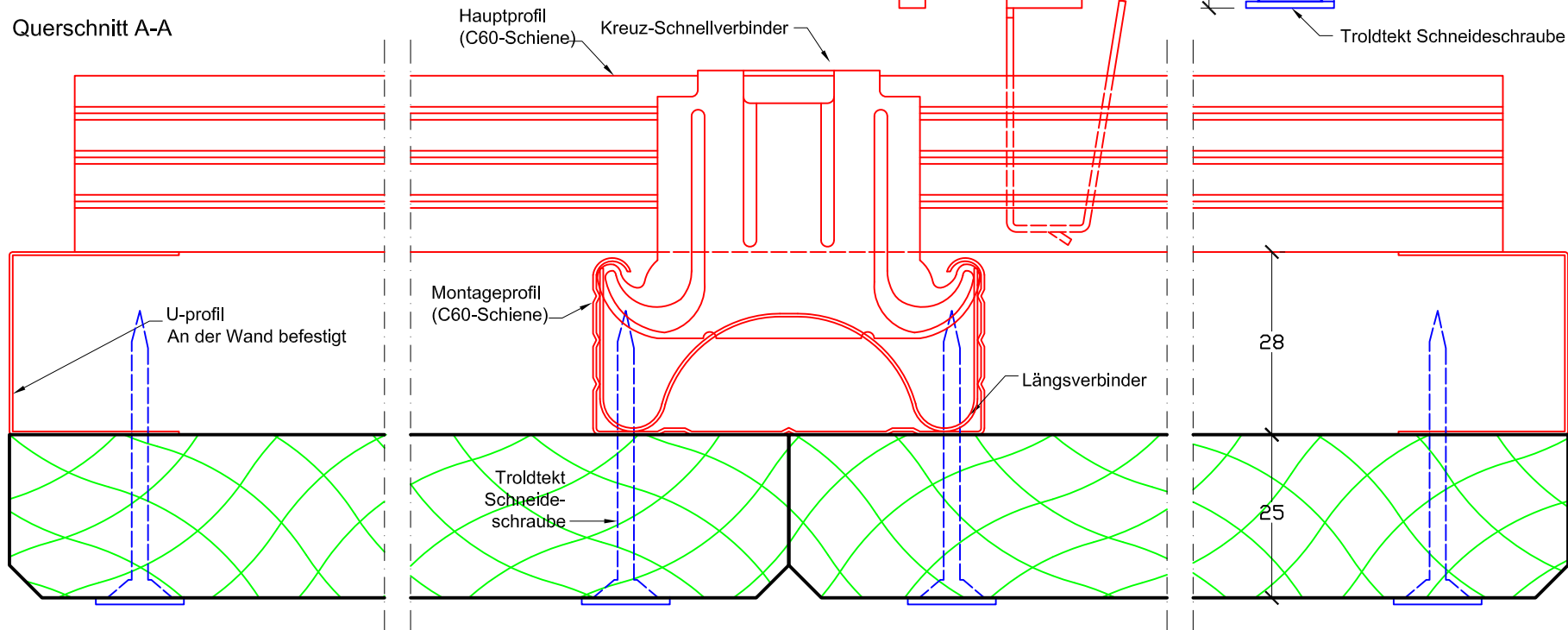
## Kantenausführung



Fix-Anker-Schnellabhänger

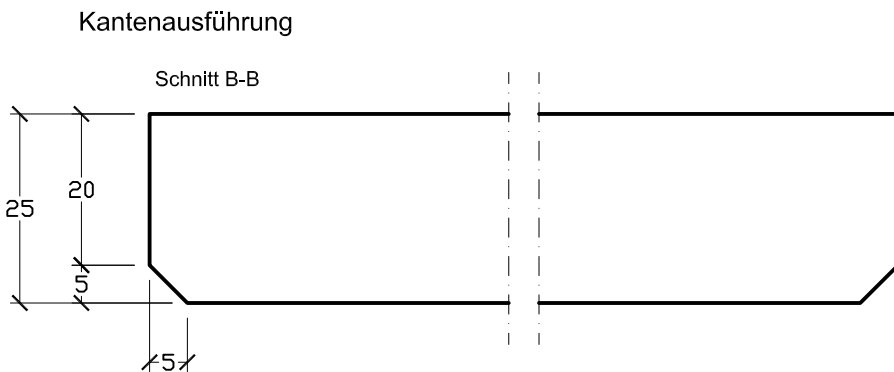


## Querschnitt A-A

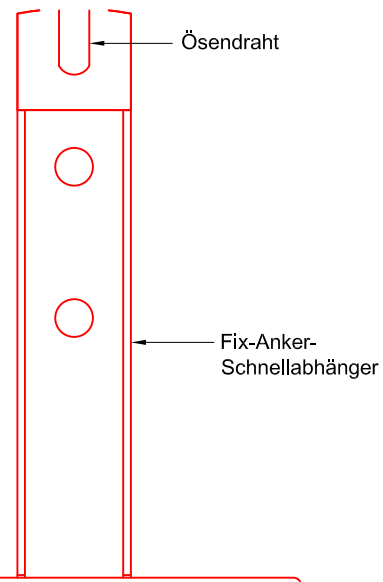
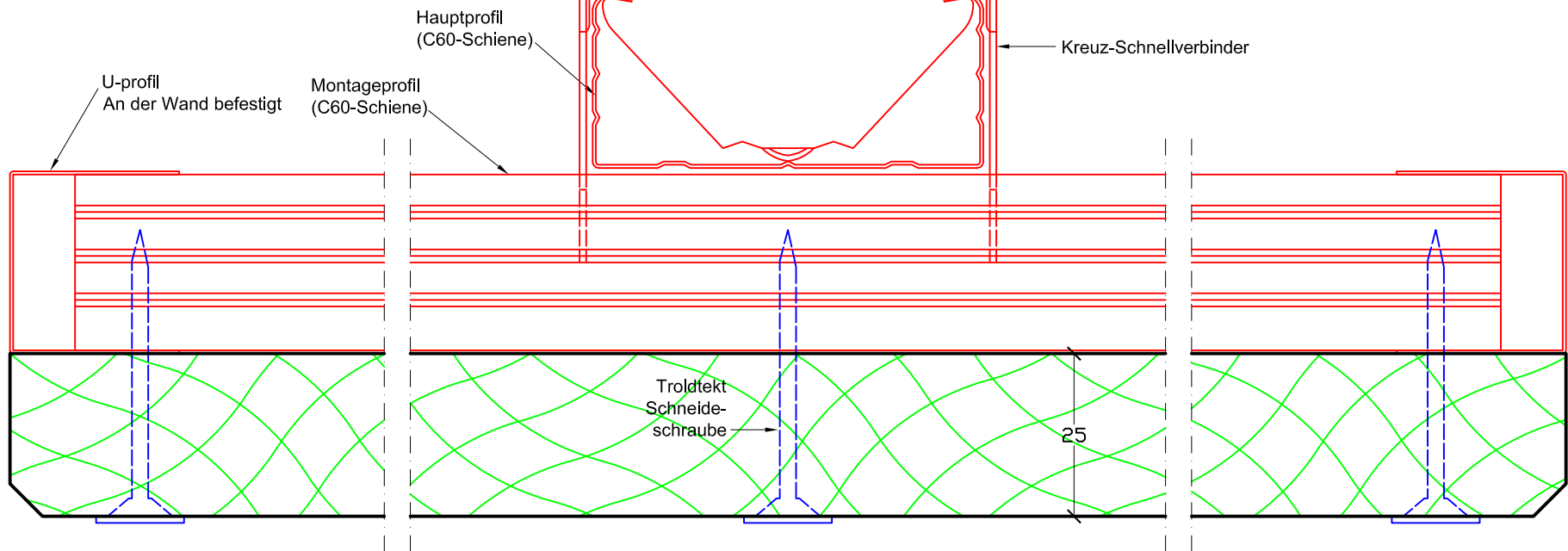


NAME		Troldekt K5 + C60, Plattenstärke: 25 mm	
INHALT		Querschnitt A-A	DATEINAME K5_c60_25mm
MST.	1:1	REV. NR.	REV. DATUM

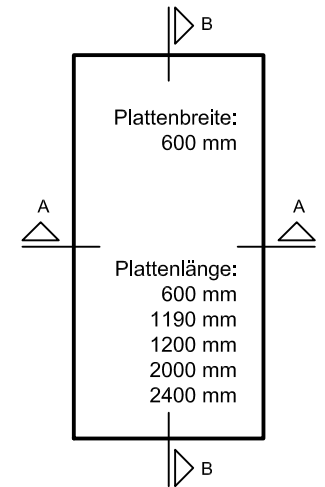
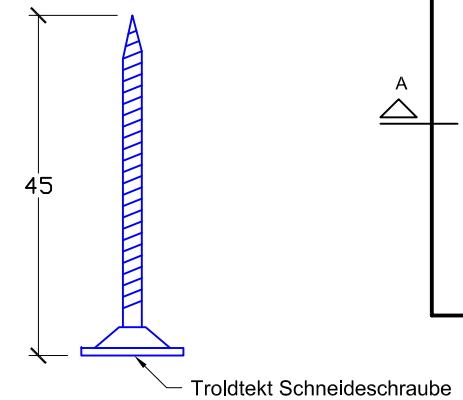




Längsschnitt B-B



Modulmass (mm) : 600 x 600 / 1190 / 1200 / 2000/ 2400



NAME	Troldekt K5 + C60, Plattenstärke: 25 mm		
INHALT	Längsschnitt B-B	DATEINAME	K5_c60_25mm
MST.	1:1	REV. NR.	REV. DATUM

