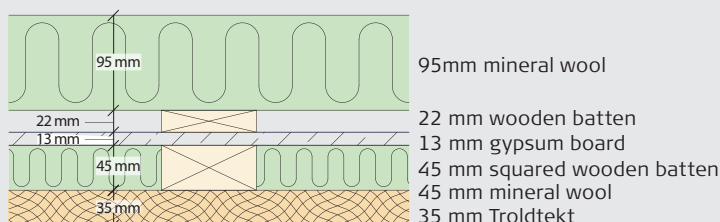


# Troldtekt®

Sound absorption measurements for  
35 mm Troldtektl, installed on  
45 mm squared wooden battens plus 45 mm mineral wool,  
13 mm gypsum board, 22 mm wooden battens plus 95 mm mineral wool

## VERTICAL SCHEMATIC DIAGRAM



## SOUND ABSORPTION MEASUREMENTS

Hz	100	125	160	200	250	315	400	500	630	800	1000	1250	1600	2000	2500	3150	4000	5000
$\alpha$	0,33	0,37	0,35	0,46	0,61	0,77	0,96	1,07	1,06	0,96	0,90	0,81	0,84	0,87	0,95	1,03	1,06	1,02

$\alpha_w = 0,90$  - NRC = 0,85 - Absorption class A.

Measurement of the sound absorption coefficients were carried out using the reverberation room method - in accordance with DS/ISO 354.

The measurements are carried out by DELTA Acoustics & Vibration A/S.

