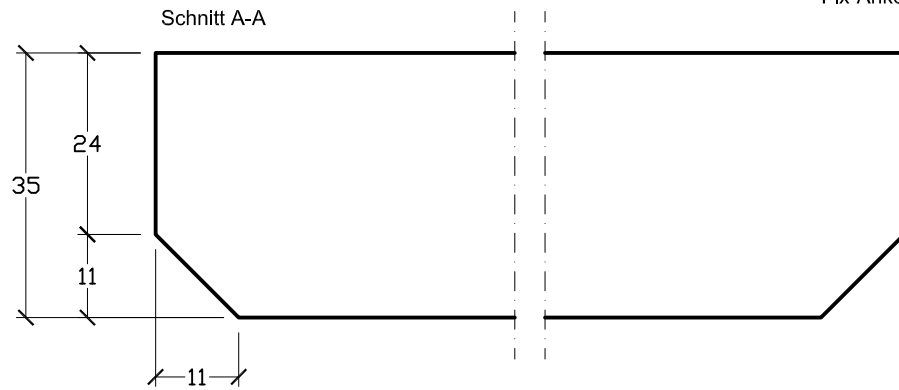
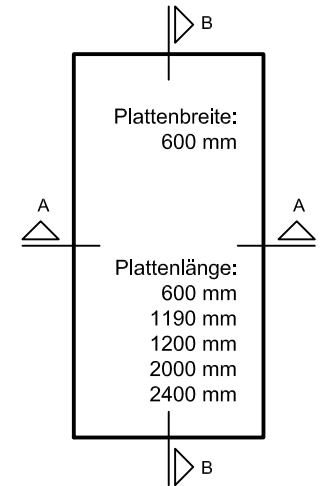
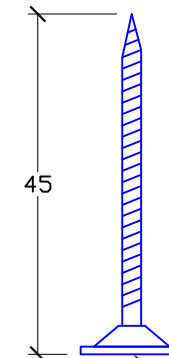
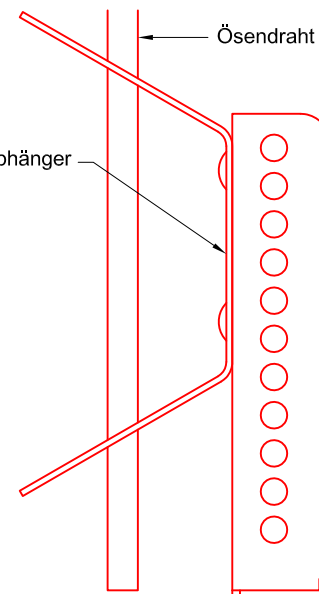


Modulmass (mm) : 600 x 600 / 1190 / 1200 / 2000/ 2400

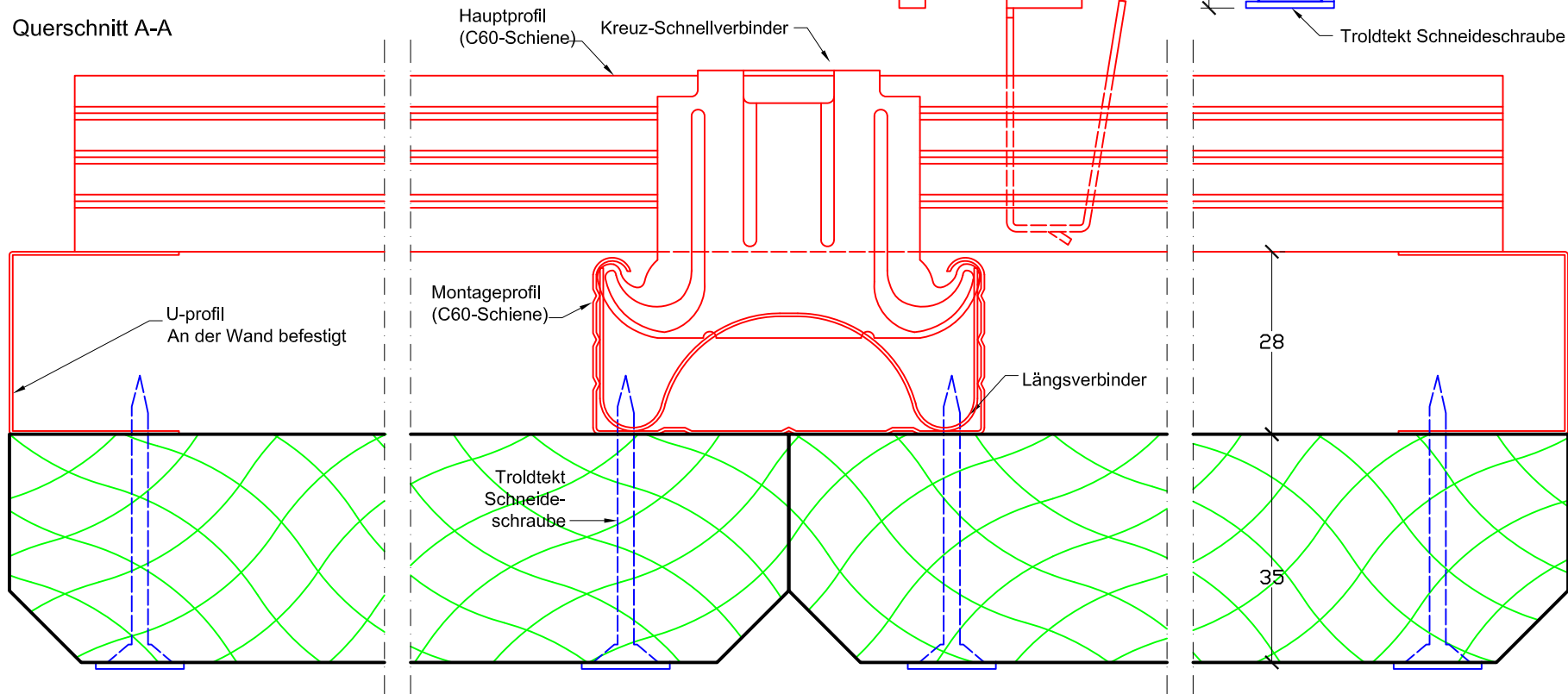
## Kantenausführung



Fix-Anker-Schnellabhänger

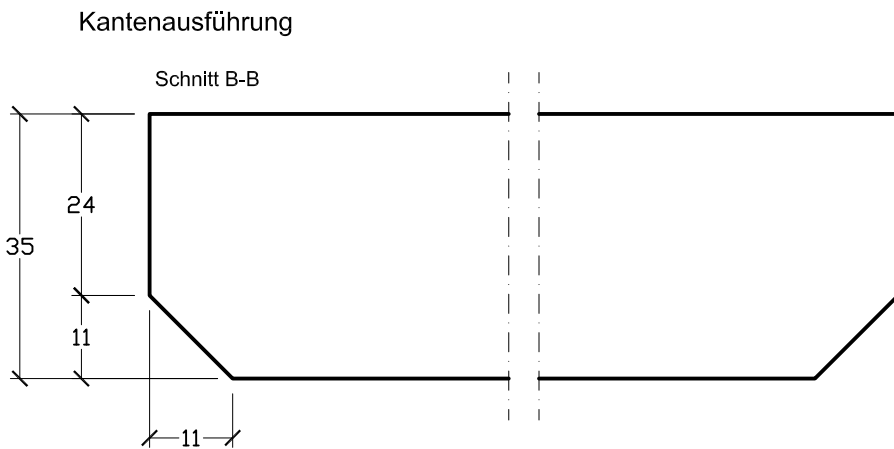


## Querschnitt A-A

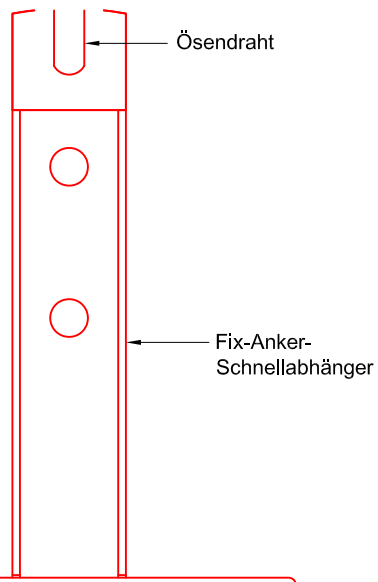
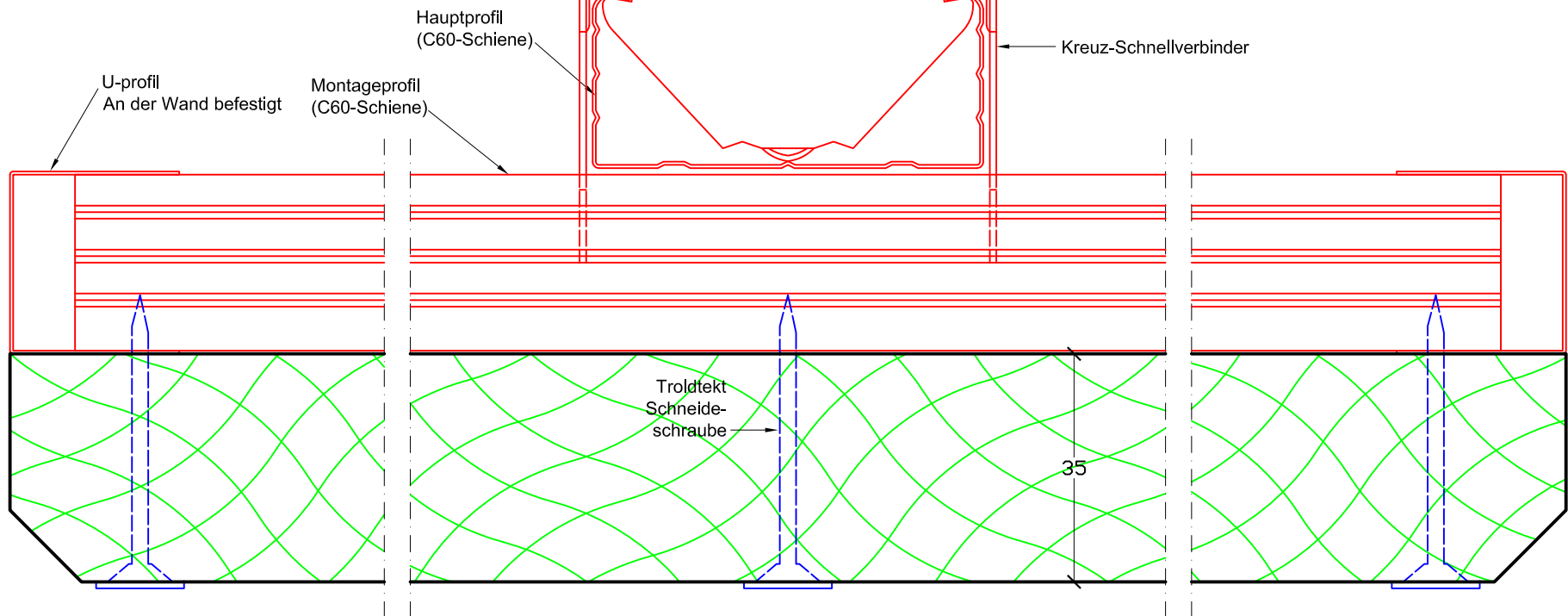


NAME		Trolldtect K11 + C60, Plattenstärke: 35 mm	
INHALT		Querschnitt A-A	DATEINAME K11_c60_35mm
MST.	1:1	REV. NR.	REV. DATUM

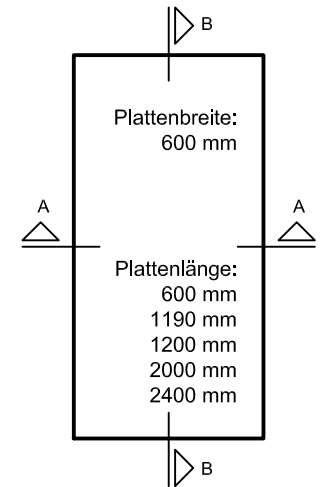
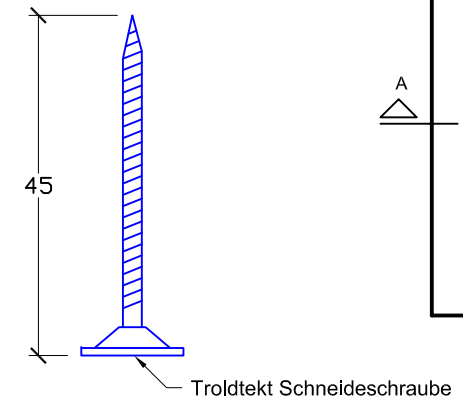




Längsschnitt B-B



Modulmass (mm) : 600 x 600 / 1190 / 1200 / 2000/ 2400



NAME Troldekt K11 + C60, Plattenstärke: 35 mm			
INHALT Längsschnitt B-B		DATEINAME K11_c60_35mm	
MST.	1:1	REV. NR.	REV. DATUM

